



**ALASKA DIVISION OF HOMELAND SECURITY &  
EMERGENCY MANAGEMENT**

**SITUATION REPORT 19- 015 • JANUARY 15  
2019**



Toll Free 1.800.478.2337

Anchorage Area 907.428.7000

SEOC 907.428.7100

<p><u><a href="#">SEOC Preparedness Level</a></u> Level 3 – SEOC Activated</p>	<p><u><a href="http://ready.alaska.gov">http://ready.alaska.gov</a></u></p>	<p><u><a href="#">National Terrorism Advisory System:</a></u> View this site for the latest NTAS bulletin: <u><a href="#">You can read the new NTAS Bulletin here.</a></u></p>
<p><u><a href="#">Maritime Security (MARSEC)</a></u> Level:1-Significant Risk</p>	<p><u><a href="#">WHO Post Pandemic:</a></u> Disease activity at seasonal levels.</p>	<p><u><a href="#">Alaska Military Installation Force Protection Level:</a></u> FPCON Bravo</p>

**(Significant changes from previous situation reports are in red.)**

**THREAT LEVEL CHANGES : NONE**

**DHS&EM OPERATIONS**

**Cook Inlet Earthquake**

The SEOC continues to be activated to Level 3 in response to the M7.0 earthquake affecting the Municipality of Anchorage, Matanuska-Susitna Borough, and Kenai Peninsula Borough. The State has activated the State Individual Assistance Program for earthquake survivors. Individuals and families affected by the earthquake can register online at [ready.alaska.gov](http://ready.alaska.gov) or by calling 1-(855)-445-7131. **Yesterday at 10:00 AM, a 3.7 aftershock located 13 mi N of Elmendorf AFB occurred. Although it was felt throughout the Anchorage and Mat Su areas, there were no reports of any damage.**

**Gulkana Water Intake Freeze up**

The Gulkana Village Council (GVC) reports their water storage tank has foundation problems. The tank is leaning and GVC can only fill it to ½ its capacity. The Alaska Native Tribal Health Consortium (ANTHC) will be inspecting the tank and foundation as soon as the weather warms above 0 degrees. The SEOC will contact ANTHC and the GVC for updates tomorrow.

**Thorne Bay Landslide**

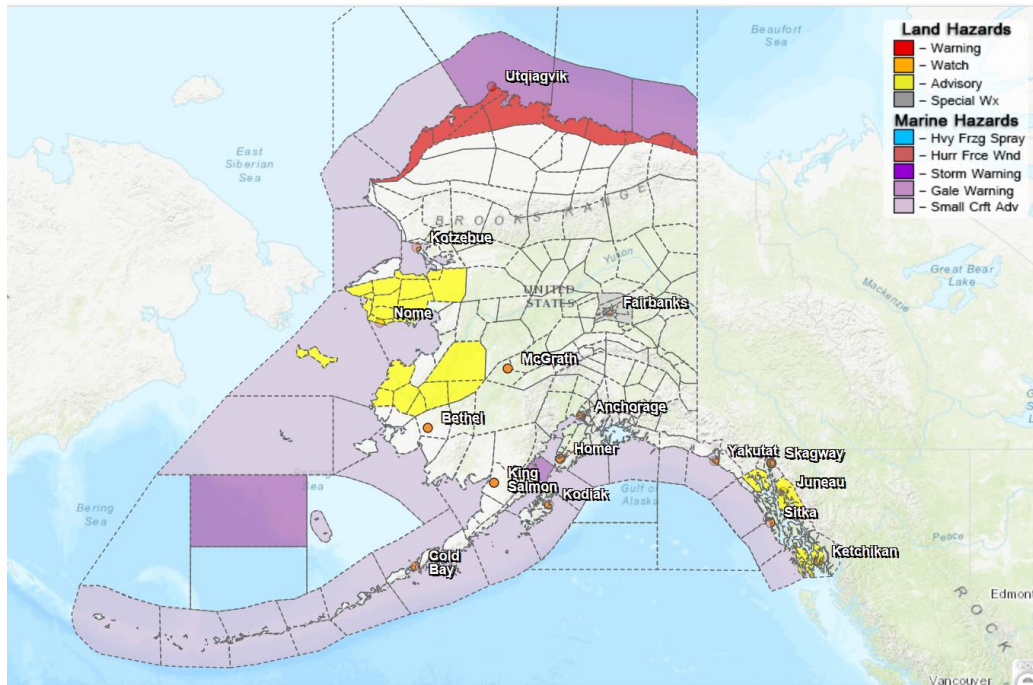
The SEOC continues to work with the City of Kasaan, Kasaan Native Village, and City of Thorne Bay to develop short-term and long-term solutions to their landslide-damaged road. The SEOC is reviewing legal and title information to determine ownership and responsibility for the road.

**State Response Activity**

<p align="center"><i>All data is as of close of business (COB) prior day</i></p>	
<p><b>Individual Assistance (IA) Applications</b></p>	
<p>Received to Date</p>	<p align="center"><b>9255</b></p>
<p><b>Immediate Needs, People Sheltered in Hotels</b></p>	

Households	70
Individuals	182
Households with Pets	30

## **Significant Weather**



A Winter Storm Warning remains in effect for the Northern Arctic Coastline from Cape Lisburne east to the Alaskan border, valid through 3 P.M. today. Additionally, there are weather Advisories in other areas of the state.

For the most current weather Watches / Warnings / Advisories: <http://www.weather.gov/arh/>

## **Avalanche Forecast:**

There are areas on the avalanche web site map near the western part of Tanana Valley State Forest and the Haines/Chilkat Pass that are showing Moderate for avalanche activity.

For the most up to date Avalanche information: <https://alaskasnow.org/>

## **Air Quality Index (AQI) Advisories**

Active advisories/episodes are in effect for Central and Eastern Interior.

<http://dec.alaska.gov/Applications/Air/airtoolsweb/Advisories/Index>

## **State of Alaska Department of Health and Social Services (DHSS)**

The Alaska DHSS website is located at <http://dhss.alaska.gov/Pages/default.aspx>

## **Spills of Oil and Hazardous Substances**

The ADEC Spill Prevention and Response page is located at

<http://dec.alaska.gov/spar/ppr/spill-information/response/>

## **Recent Earthquakes**

USGS Earthquake Information: <http://earthquake.usgs.gov/>

National Tsunami Warning Center: <http://ntwc.arh.noaa.gov/>

### **Travel Advisory**

For current driving conditions dial 511 or link to <http://511.alaska.gov/>

### **Alaska Volcanoes**

**Veniaminof** Alert Level: Advisory and Aviation Color Code: Yellow

**Cleveland** Alert Level: Advisory and Aviation Color Code: Yellow

**Great Sitkin** Alert Level: Advisory and Aviation Color Code: Yellow

**Semisopchnoi** Alert Level: Advisory and Aviation Color Code: Yellow

For Alaska Volcano updates, go to: <https://www.avo.alaska.edu/>

### **Alaska Cyber Security Information**

State Employees may sign up for cyber security notifications and alerts at

<https://oit.alaska.gov/Security>

**The Next Situation Report:** will be 16 January 2019 at 8:00 am. A significant change in the situation or the threat level will prompt an interim report.

This report is posted on the internet at <https://ready.alaska.gov/sitrep>. To register for email distribution, go to <http://list.state.ak.us/mailman/listinfo/dhsem.situation.report>. Direct questions regarding this report to the SEOC at 907-428-7100 or [seoc@alaska.gov](mailto:seoc@alaska.gov).